

MAJESTY  YACHTS





## Refined boat building skills perfected over 38 years.

At Gulf Craft, we believe each yacht we build is unique – an individual and complex exercise in engineering, design and craftsmanship. Thanks to our vertically integrated production system, each yacht is an individual project, finished uniquely to match the desires of its owner.

Our yachts are developed using detailed computer modeling and implementing the latest technologies such as CNC and waterjet, but the human hand still lends the final touches and it is the human eye that grants the final seal of approval after the industrial tests and standards are stamped. We value craftsmanship and it is a skill we have nurtured for over three decades.



## Building this journey together.

Building your Majesty Yacht is more than just overseeing a work of art come to reality, it's a lot more than just creating something truly special, and it's more than just an experience. It's an exhilarating journey. Every Majesty Yacht built is magnificent in its own way. Your vision is translated by our team of in-house designers and engineers. Of course, we also work with world-renowned designers from Italy, Holland and US to bring your ideas to fruition.

The owner of Majesty 155 M/Y Sehamia upon the delivery of his 5th yacht said:

"Each yacht I've bought from Gulf Craft has been a joy to own. The build quality is outstanding and clients are treated with the utmost consideration. Working with the team to customize the Majesty 155 was a pleasure."



MAJESTY  YACHTS

# YACHT COLLECTION

MAJESTY 48 | MAJESTY 62 | MAJESTY 62M  
MAJESTY 72 | MAJESTY 90





## MAJESTY 48

Introduced as an entry-level model to the Majesty Yacht series, the Majesty 48 is a smartly laid out and fully equipped family leisure yacht. With an unprecedented amount of space onboard, larger than expected interiors, plenty of living and entertaining space, 360-degree views offering abundant light, world-class construction, and finish, this yacht is the perfect choice for both holiday and weekend cruising. This flybridge yacht has been designed to entice first-time yacht buyers and can be comfortably owner-managed all by themselves.



Dining Area



Saloon

This seemingly compact yacht inventively packs three cabins, including generously sized saloon, full-beam master suite, separate dining area for 4, fully equipped galley, two heads, and cleverly concealed crew accommodation.





Galley



Main Helm

On the outside, she offers ample room for entertaining, with social cockpit area, a spacious flybridge that can seat up to 10 people, a concealed bimini top, retractable swim ladder on the aft deck, rich wraparound seating area concealing a full-fledged entertainment system, all making the voyage a memorable experience. The lower deck can accommodate up to 6 guests in three spacious cabins designed for extended time onboard.



Owner's Cabin



Owner's Settee



Owner's Head



Forward VIP Cabin



Forward VIP Head



Twin Guest Cabin



Flybridge



Flybridge Helm



Aft Seating Area



Forward Area

Complete with a magnificent stereo surround system, fitted carpet throughout and a large seating area in the saloon, the Majesty 48 is imperial living at its best. Featuring a large swim platform and a foldaway swim ladder, the Majesty 48 is the perfect yacht to appreciate the beautiful blue ocean and experience the freedom on the water whenever you want.

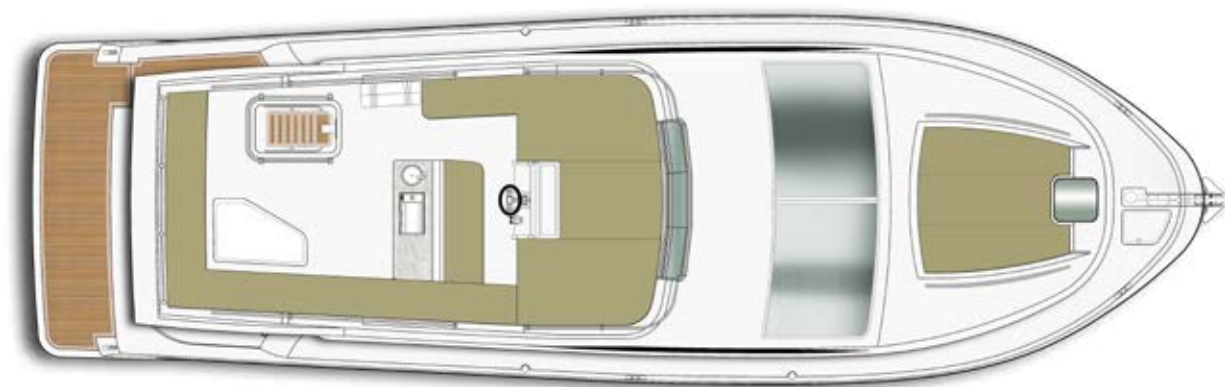


## TECHNICAL SPECIFICATIONS

<u>LENGTH OVERALL</u>	<u>49 ft 2 in (14.98 m)</u>
<u>BEAM</u>	<u>16 ft 5 in (4.99 m)</u>
<u>DRAFT</u>	<u>3 ft 1 in (0.94 m)</u>
<u>DISPLACEMENT</u>	<u>20 t approx.</u>
<u>FUEL CAPACITY</u>	<u>400 US gal (1,514 l)</u>
<u>FRESH WATER CAPACITY</u>	<u>100 US gal (379 l)</u>
<u>BLACK WATER CAPACITY</u>	<u>31.90 US gal (120.80 l)</u>
<u>GREY WATER CAPACITY</u>	<u>21.90 US gal (83 l)</u>
<u>GENERATOR</u>	<u>15.3 kW, 50 Hz</u>
<u>ENGINES</u>	<u>2 x 543 hp</u>



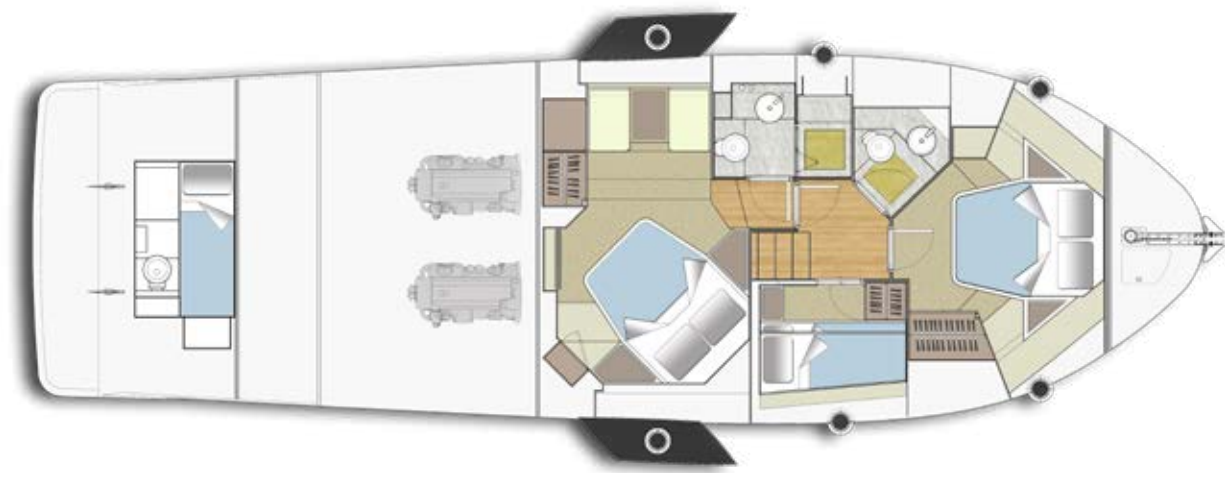
# DECK PLANS



Fly-bridge



Main Deck



Lower Deck

The layouts shown are some of the possible options and do not necessarily correspond to the standard version.





## MAJESTY 62

Majesty 62 is a strikingly beautiful yacht, exquisitely designed and engineered with all the luxuries of a superior superyacht making her the ultimate holiday home on the water. Her noticeably sleek profile conceals the skillful design of her decks, which include saloon and dining space, 4 guest cabins, 3 heads, and separate accommodation for the crew. Space onboard is utilized brilliantly by blending indoor and outdoor areas with an aft-galley layout, making it easy to serve the cockpit and the large aft with a huge sliding door making it feel uniquely spacious.





Dining Area



Saloon

Her innovative and comfortable interiors make her more captivating with specifically designed panoramic side windows that create the “on the water” impression while seated at its main saloon. A U-shaped seating configuration located next to the captain’s chair, allowing the self-driving owner to not to be segregated.



Galley



Main Helm



Owner's Head



Owner's Cabin

The elegant sleeping quarters has four comfortable cabins and heads including the full-beam owner's cabin being situated mid-ship allowing portholes on both the port and starboard to bring the feel of light and space also below deck. There is an additional separate area for one crew member, including a personal head and shower.



Bow Seating



Aft Seating

The flybridge and bow areas are designed to maximize outside space making this the perfect choice for leisure cruising. Out at sea, her exhilarating performance feels light and responsive all the way up to high speeds and smooth operation.



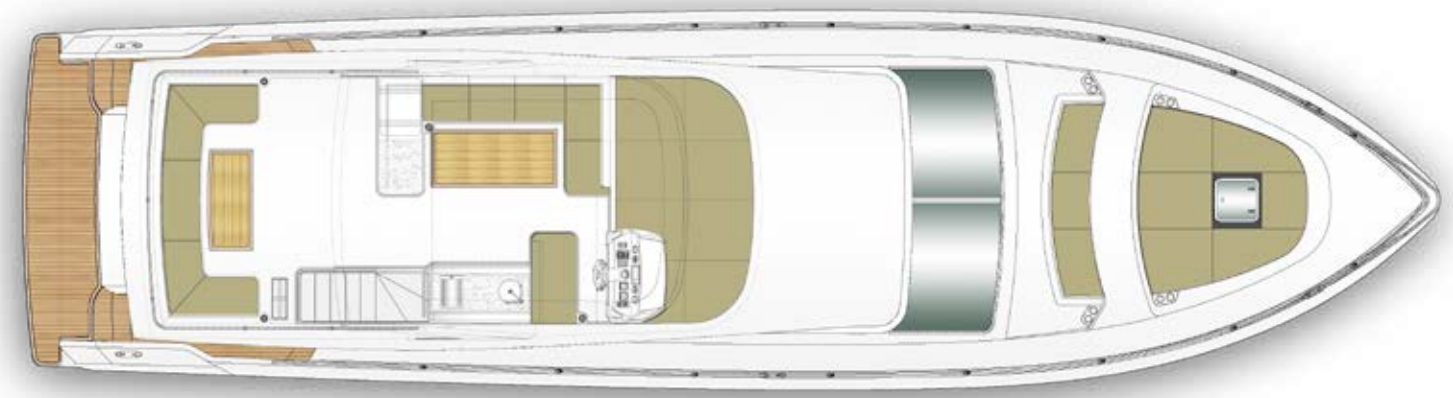
## TECHNICAL SPECIFICATIONS

<u>LENGTH OVERALL</u>	<u>61 ft 7 in (18.78 m)</u>
<u>BEAM</u>	<u>16 ft 4 in (4.98 m)</u>
<u>DRAFT</u>	<u>3 ft 11 in (1.20 m)</u>
<u>DISPLACEMENT</u>	<u>35 t approx.</u>
<u>FUEL CAPACITY</u>	<u>963 US gal (3,646 l)</u>
<u>FRESH WATER CAPACITY</u>	<u>150 US gal (568 l)</u>
<u>BLACK WATER CAPACITY</u>	<u>64.8 US gal (245 l)</u>
<u>GREY WATER CAPACITY</u>	<u>17.7 US gal (67 l)</u>
<u>GENERATOR</u>	<u>28 kW, 50 Hz</u>
<u>ENGINES</u>	<u>2 x 800 hp</u>



European Layout Also Available

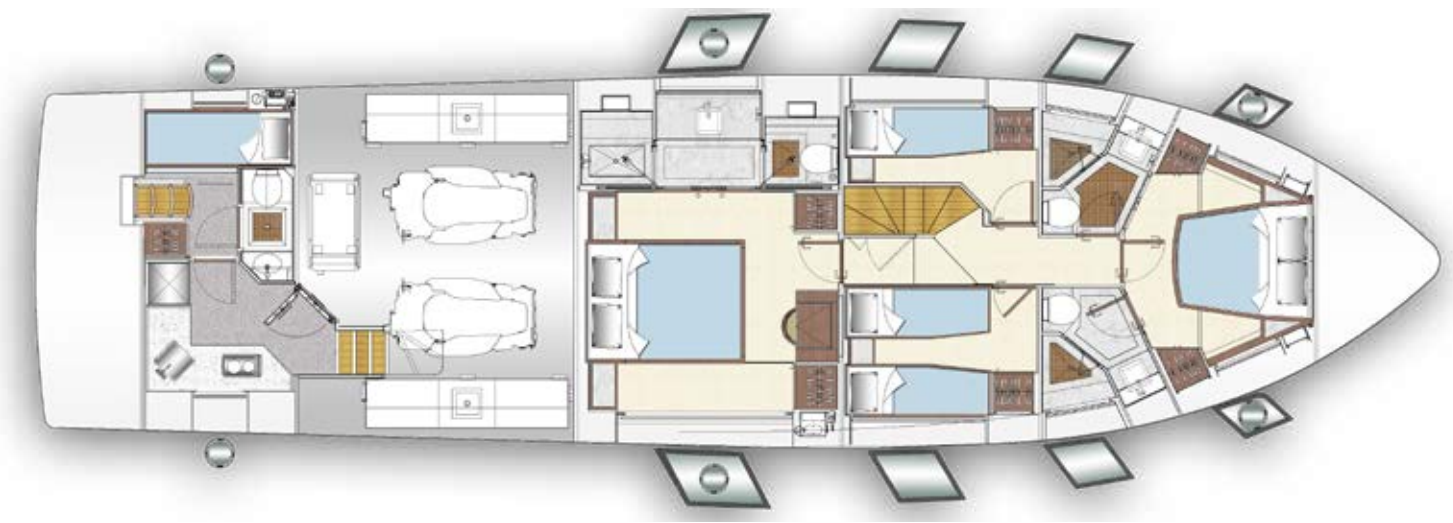
# DECK PLANS



Fly-bridge



Main Deck



Lower Deck

The layouts shown are some of the possible options and do not necessarily correspond to the standard version.





## MAJESTY 62M

Building on the success of her predecessor, the Majesty 62, Gulf Craft introduces a new member of the Majesty brand, the Majesty 62 M. The Majesty 62 M is designed with the Maldives market in mind, arriving on the scene as a Tropical Weekender: a compact high-performance yacht. Just like its sibling, this yacht features a toned exterior profile and strategic use of space. Designed for lovers of open boating, it features an enclosed yet a 360-degree view flybridge up top suitable for all-season yachting conditions and allowing guests to stay longer onboard and spread out in relaxing surroundings.





Main Deck

Down below the yacht provides a sophisticated living, dining and galley area, entertainment spaces, spacious cabins, sleeping quarters and heads - all with windows for natural light for families and friends.



Main Deck



Owner's Stateroom





## TECHNICAL SPECIFICATIONS

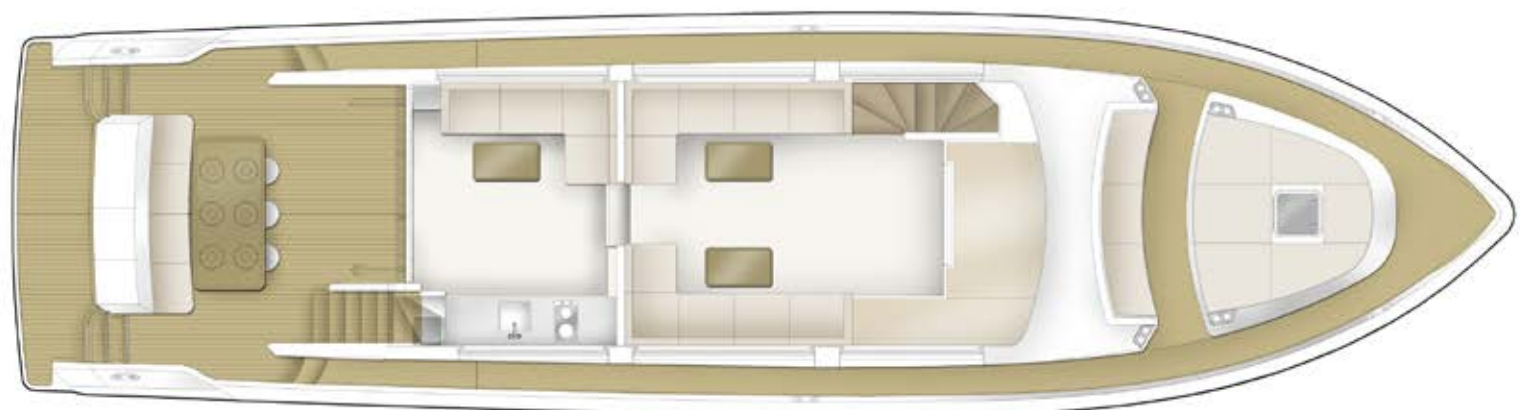
LENGTH OVERALL	61 ft 6 in (18.78 m)
BEAM	16 ft 3 in (4.97 m)
DRAFT	3 ft 9 in (1.2 m)
DISPLACEMENT	35 t approx.
FUEL CAPACITY	1,003 US gal (3,797 l)
FRESH WATER CAPACITY	150 US gal (567 l)
BLACK WATER CAPACITY	64.8 US gal (246 l)
GREY WATER CAPACITY	20 US gal (76 l)
GENERATORS	28 kW, 50 Hz
ENGINES	2 X 1,150 hp



# DECK PLANS



Fly-bridge



Main Deck



Lower Deck





## MAJESTY 72

The Majesty 72 boasts an exquisite design and distinguished engineering. The 22m family-oriented yacht is your ticket to enjoying the sea in style and comfort featuring 4 guest rooms and a high-quality lavish interior, it continues the legacy of flybridge yachts and cruisers built by Majesty Yachts. This flybridge motor yacht model aims to fill the gap between the Majesty 62 and 90, delivering luxury for up to eight guests.



Main Saloon

The Majesty 72 yacht showcases Gulf Craft's refined selection of interior furnishing, combined with excellent workmanship throughout the main saloon with an open plan C and U-shaped seating, galley, dinette, and split-level captain's chair. Down below are 4 magnificent cabins including the full-beam owner's stateroom all with private en-suite heads and sleeping quarters for 2 crew.





Main Deck



Owner's Stateroom

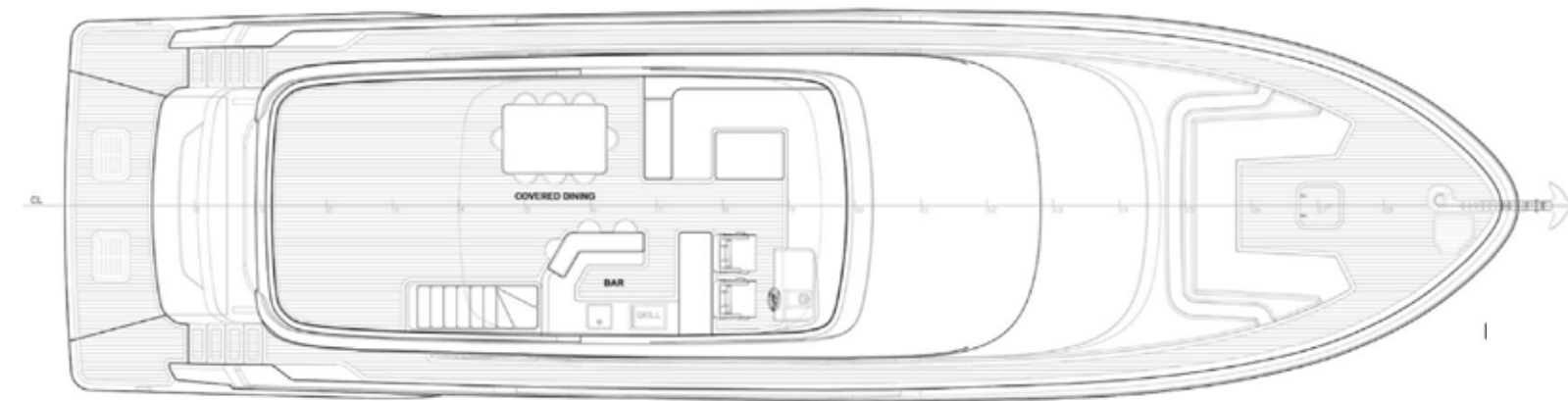


## TECHNICAL SPECIFICATIONS

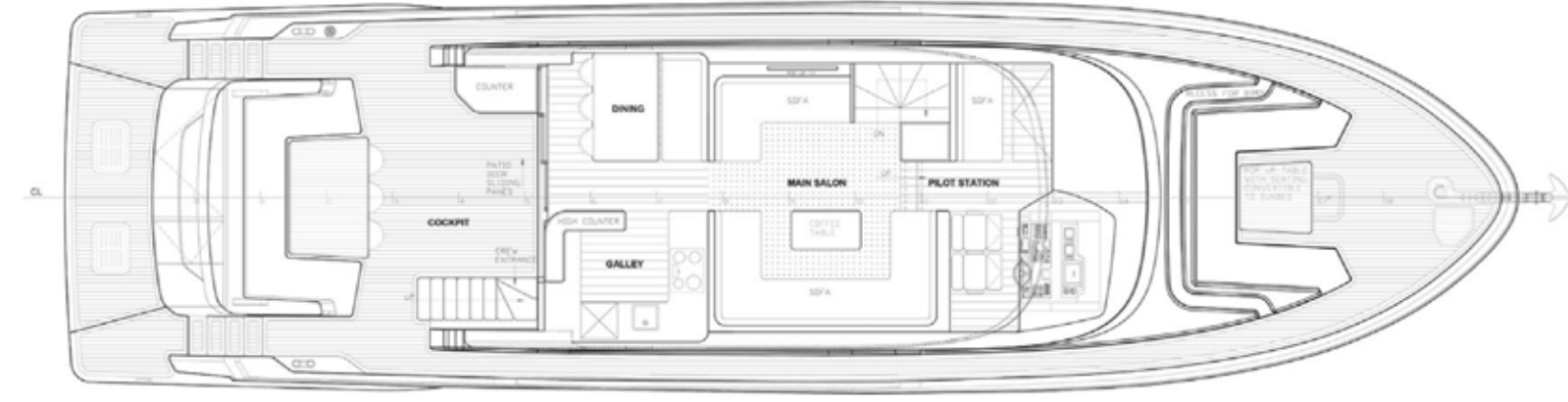
LENGTH OVERALL	72 ft 2 in (21.99 m)
BEAM	19 ft 5 in (5.91 m)
DRAFT	4 ft (1.23 m)
DISPLACEMENT	45.3 t approx.
FUEL CAPACITY	1,712 US gal (6,481 l)
FRESH WATER CAPACITY	280 US gal (778 l)
BLACK WATER CAPACITY	61 US gal (231 l)
GREY WATER CAPACITY	61 US gal (231 l)
GENERATORS	Kohler 28 kW, 50 Hz
ENGINES	2 X 1,550 hp



# DECK PLANS



Fly-bridge



Main Deck



Lower Deck





## MAJESTY 90

The Majesty 90 offers an exciting open-plan interior that creates a seamless blend of living spaces and its surroundings seascapes. It's a high-volume superyacht that offers a lot of spacious accommodation saloon spaces, 4 staterooms, and 2 crew accommodation enhancing its functionality alongside outstanding 360-degree views all around.



Dining Area



Saloon

Boarding the Majesty 90 through the large stern bathing platform and up the steps to the cockpit, one is immediately impressed by the large area, where 10 persons can dine comfortably. The ease of access to the staterooms, from the main deck, the full-width owner's cabin with en-suite at the aft are the clear indicators that Gulf Craft are experts in semi-custom build, allowing for personal taste and customer requirements.



Galley



Main Helm





Bespoke furnishing and interiors are evident throughout the yacht to create a luxurious yet homely feeling. Each guest stateroom has their own private en- suite.



Owner's Stateroom



Owner's Walk-in Closet



Owner's En Suite



Forward VIP En Suite



Forward VIP Stateroom



STBD Twin Guest Stateroom



PORT Twin Guest Stateroom



Fly bridge



Forward Seating and Sunbed



Fly bridge Seating and Bar

The flow of movement around the yacht is complemented by a flexible fly bridge with the option to accommodate either water toys, crane, or additional seating and can be accessed via a stairway from the cockpit which includes a fully equipped wet bar, electric barbecue, refrigerator, and ice maker. For water sports enthusiasts, the hydraulically operated 6 step swim platform transformer is a very practical addition allowing easy access to and from the sea.



## TECHNICAL SPECIFICATIONS

<u>LENGTH OVERALL</u>	<u>91 ft 11.5 in (28.03 m)</u>
<u>BEAM</u>	<u>21 ft 3.5 in (6.49 m)</u>
<u>DRAFT</u>	<u>4 ft 3 in (1.29 m)</u>
<u>DISPLACEMENT</u>	<u>85 t approx.</u>
<u>FUEL CAPACITY</u>	<u>3,010 US gal (11,394 l)</u>
<u>FRESH WATER CAPACITY</u>	<u>500 US gal (1,892 l)</u>
<u>BLACK WATER CAPACITY</u>	<u>121 US gal (458 l)</u>
<u>GREY WATER CAPACITY</u>	<u>121 US gal (458 l)</u>
<u>GENERATORS</u>	<u>2 x 40 kW, 50Hz</u>
<u>ENGINES</u>	<u>2 x 1,874 hp</u>



# DECK PLANS



Fly-bridge



Main Deck



Lower Deck

The layouts shown are some of the possible options and do not necessarily correspond to the standard version.



SETTING NEW STANDARDS OF LUXURY







5th Floor, Dudley House, 169 Piccadilly  
Mayfair, London, W1J 9EH, United Kingdom  
**+44 (0)203 455 2355 / [info@iys.uk.com](mailto:info@iys.uk.com)**

Pictures in this catalogue may be taken from different vessels of the same type for example purpose only. Performance estimates are given in good faith, but are in no way guaranteed. Dirt on the hull, damage to the propellers, external water and air temperatures and added weight, fuel and water carried can all adversely affect performance. For these and other reasons we can give no performance guarantees. Data and characteristics are not binding; details, colors, descriptions and illustrations are for information purpose only. The drawings and pictures may include specific equipment or modifications which are not part of the standard specifications of the vessel. Standard specifications may be defined differently in different sales territories. Gulf Craft Inc. reserves the right to make any changes in specifications or equipment without prior notice. In case of any inconsistency between specifications sheet, product catalogue and price list, the price list prevails. Customers are recommended to contact one of our sales representatives to reconfirm standard and optional features on the vessels.



by *Gulf Craft*